

PART OF THE SE.1/4, OF SECTION 23, T.5N., R.1W., S.L.B. & M.

666

KENT SUBDIVISION

IN WEBER COUNTY

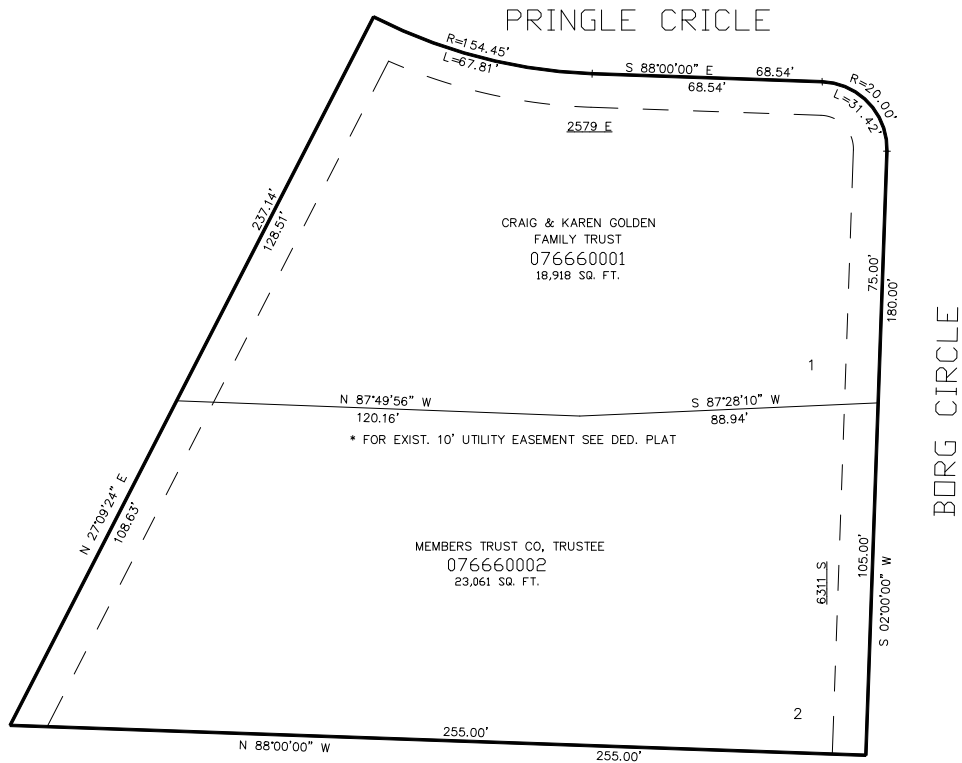
TAXING UNIT: 159

SCALE 1" = 30'

SEE PAGE 94

SEE PAGE 95

SEE PAGE 94



SEE PAGE 94

10' UTILITY & DRAINAGE EASEMENTS EACH
SIDE OF PROPERTY LINES AS INDICATED
BY DASHED LINES EXCEPT AS OTHERWISE
SHOWN.

FOR COMPLETE ENG DATA SEE
ORIGINAL DEDICATION PLAT IN
BOOK 61, PAGE 97 OF RECORDS.